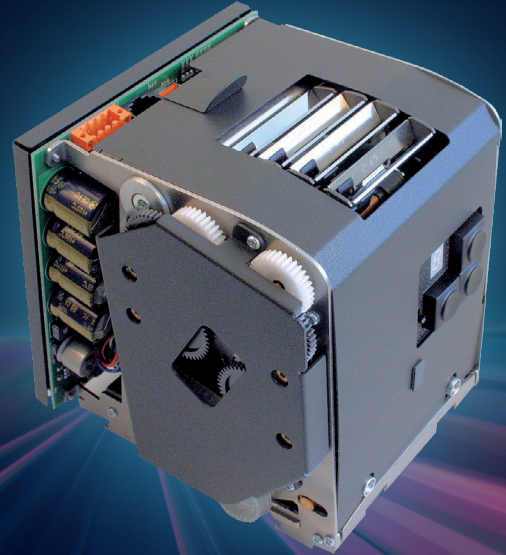


Print technology

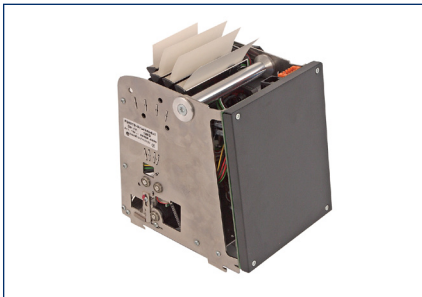
for sales systems

This print module comprises a heavy-duty thermo printing mechanism. Perfect ticket printing and enormous printing speed are the stand-out features of the PDM 170. Besides printing text, it goes without saying that the PDM 170 also produces top-quality graphic printouts. Optimum paper handling ensures optimum productivity. The durability of the print head, sets the benchmark in this performance class.

The PDM 170 is assembled to the strictest levels of precision in our head office in Eberbach – our guarantee of quality “Made in Germany”.



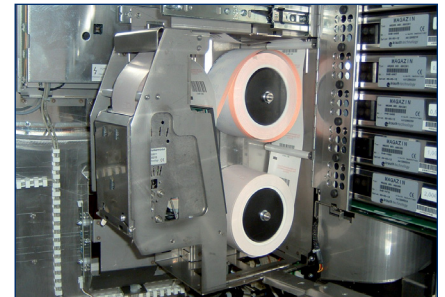
- Thermo-printing mechanism, available in different variants:
 - Complete system or desktop printer for printing out advance sales
 - Assembly for machines
 - OEM assembly
- Up to 4 paper types can be selected by the paper switcher
- Paper width adjustment
- Add-on barcode scanner
- Ethernet interface
- Rugged design
- Designed for stationary and mobile use
- Low maintenance and easy to service



Available as OEM assembly



Usable as a table printer in advance sales



Processing of several, different paper types

Extract from technical data:

Assembly dimensions:	W x H x D: 117 mm x 142 mm x 139 mm
Printing technology:	Thermodirect
Printing speed:	Up to 200 mm/sec
Thermo head resolution:	300 dpi
Print/paper width:	Maximum 81.3 mm / 86 mm
Cutter:	Integrated cutter, tickets up to 350 g/m ² (0.4 mm)
Data interface:	USB interface 2.0 (full speed) and RS 232 serial
Desktop printer dimensions:	W x H x D: 203 mm x 178 mm x 270 mm
Paper:	Thermo paper rolls, folded stack (optional)
Paper thickness:	0.07 to 0.4 mm (variable head proof for stable or thicker paper materials)
Maximum ticket length:	Up to 300 mm or endless strips
Knife:	~ 1,000,000 cuts (depending on paper type)
Number of paper types:	Up to 4 different paper rolls
Tray changeover duration:	< 1 second

The information contained in this document are subject to change without notice. The illustrations, images and screenshots are examples. Krauth technology assumes no liability for any errors contained within, indirect damages or for compensation for expenses incurred by the distribution, provision and use of this material. If this document is part of a system documentation, the relevant agreements on documentation and updating apply.